

1 2 3 4 5 6 7 8

REV	LOCATIONS	DESCRIPTION	DATE	REVISER	APPD

A

B

C

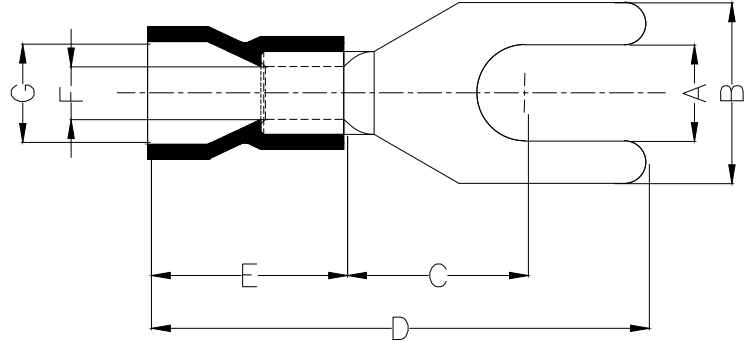
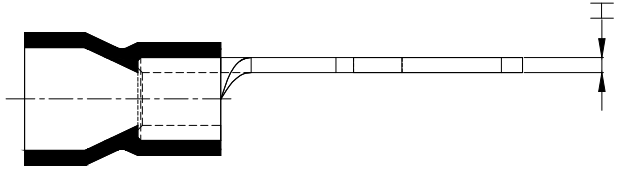
D

E

F

Notes:

- Material: Copper
- Insulator: PVC (UL 94V-0) Blue
- Plating: Matte tin plated
- Wire range: 1.5~2.5mm²/ (16~14AWG)
- Applicable screw: #10 UNC
- Temperature Range-Operating: 0°C~75°C
- Maximum electrical rating: 600V
- Max current: 27A



PART NO.	Dimensions							
	A	B	C	D	E	F	G	H
FYT03-00200050SABU2	±0.3	±0.5	±1	±1	±1	±0.5	±0.5	±0.05
FYT03-00200050SABU2	5.3	8.1	6.5	21.2	10.0	2.3	4.7	0.8

<p>THIRD ANGLE PROJECTION</p>	GENERAL TOLERANCES (UNLESS SPECIFIED)		APPROVE BY	DATE	PART NO.	ITEM NO.	<p>Building Technology Cornerstone</p>
	X. ±0.30	X.* ±5'	LEO	10/JAN/21	FYT03-00200050SABU2	FYT03	
	X.X ±0.20	X.X' ±2'	CHECKED BY	DATE	TITLE		
	X.XX ±0.15	X.XX' ±1'	GISELLE	10/JAN/21	Spade tongue terminal		
SCALE	SIZE	X.PYD ±0.10	X.PYD' ±0.5'	DRAWN BY	DATE	THIS DRAWING CONTAINS INFORMATION THAT IS PROPRIETARY TO TXGA INDUSTRIAL ELECTRONICS(S.Z)CO.,LTD AND SHOULD NOT BE USED WITHOUT WRITTEN PERMISSION	
5:1	A4			PYD	10/JAN/21	REV 0	SHEET NO. 1/1

1 2 3 4 5 6 7 8